

## RETHINKING SUSTAINABILITY: HEALTH/RESILIENCE/CLIMATE CHANGE

COMPREHENSIVE STUDIO: SPRING 2020

## HEALTH/RESILIENCE/CLIMATE CHANGE: CONNECTIONS

**“Vulnerable populations are disproportionately affected with regard to transportation, buildings, and land use, and are most at risk for experiencing the effects of climate change. Working across sectors to incorporate a health promotion approach in the design and development of built environment components may mitigate climate change, promote adaptation, and improve public health.”**

**“The Built Environment, Climate Change, and Health: Opportunities for Co-Benefits”  
(Margalit Younger, Heather R. Morrow-Almeida, Stephen M. Vindigni MPH, Andrew L. Dannenberg MD, MPH)**

**“Human beings are at the centre of concerns for sustainable development. They are entitled to a healthy and productive life in harmony with nature”. The goals of sustainable development cannot be achieved when there is a high prevalence of debilitating illnesses, and population health cannot be maintained without ecologically sustainable development”**

**Principle I of the Rio Declaration on Environment and Development**

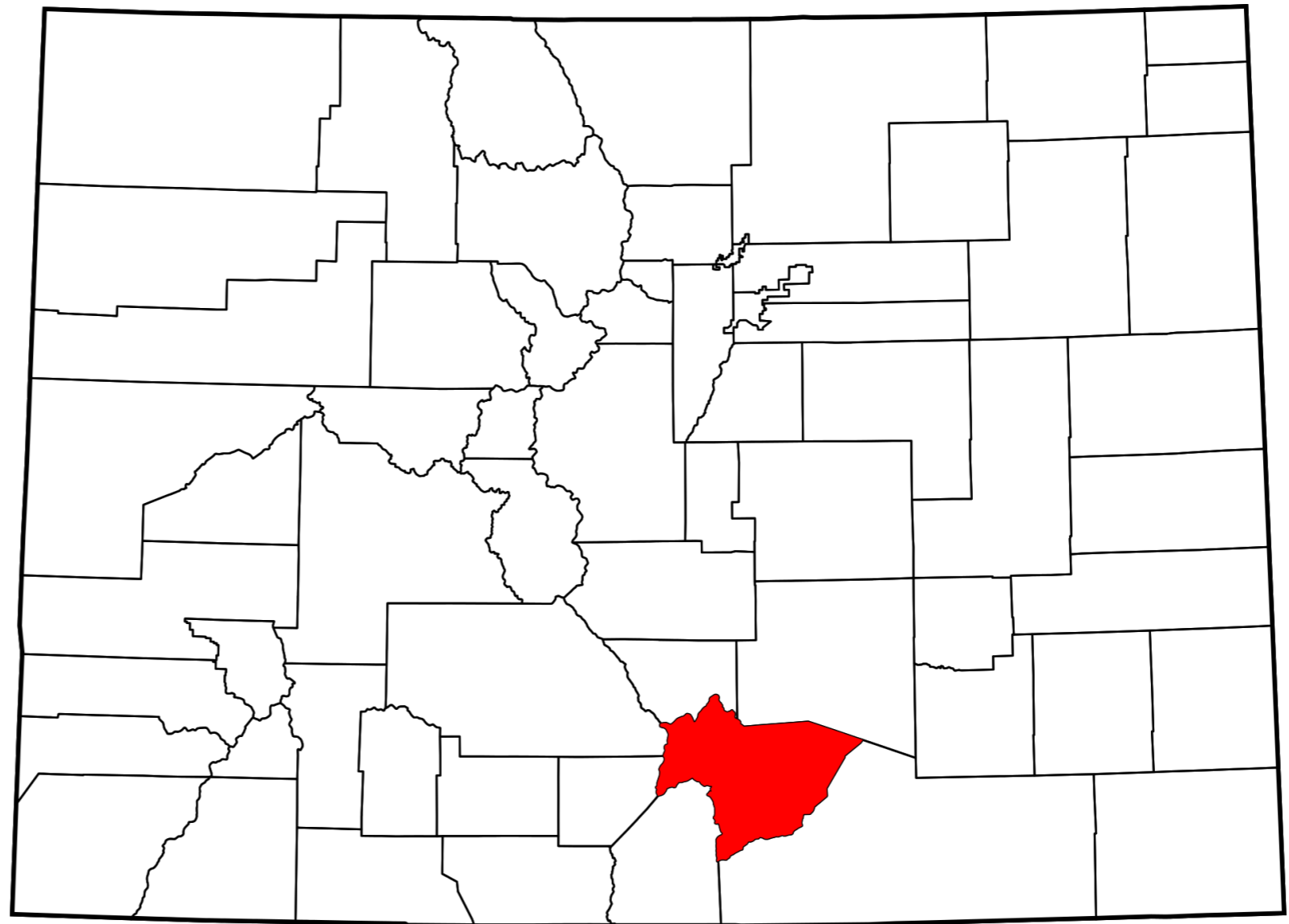
## SITE/CONTEXT:

Huerfano County is located south of Pueblo, CO and west of San Luis Valley. **Huerfano County is 1,593.24** square miles and includes the cities of Walsenburg, La Veta, Gardner, Farista, Cuchara, Calumet, and Badito. **The population in Huerfano County is 6,677.** One in three children live in poverty and the **average median income is \$35,800**, half of the average state income of **\$66,075**. The county has experienced several traumatic events dating from generations ago to **third largest fire in Colorado history** and the ongoing **opioid epidemic**. Ongoing intergenerational poverty and traumatic events continue to play as a root cause for the county's unhealthy outcomes.

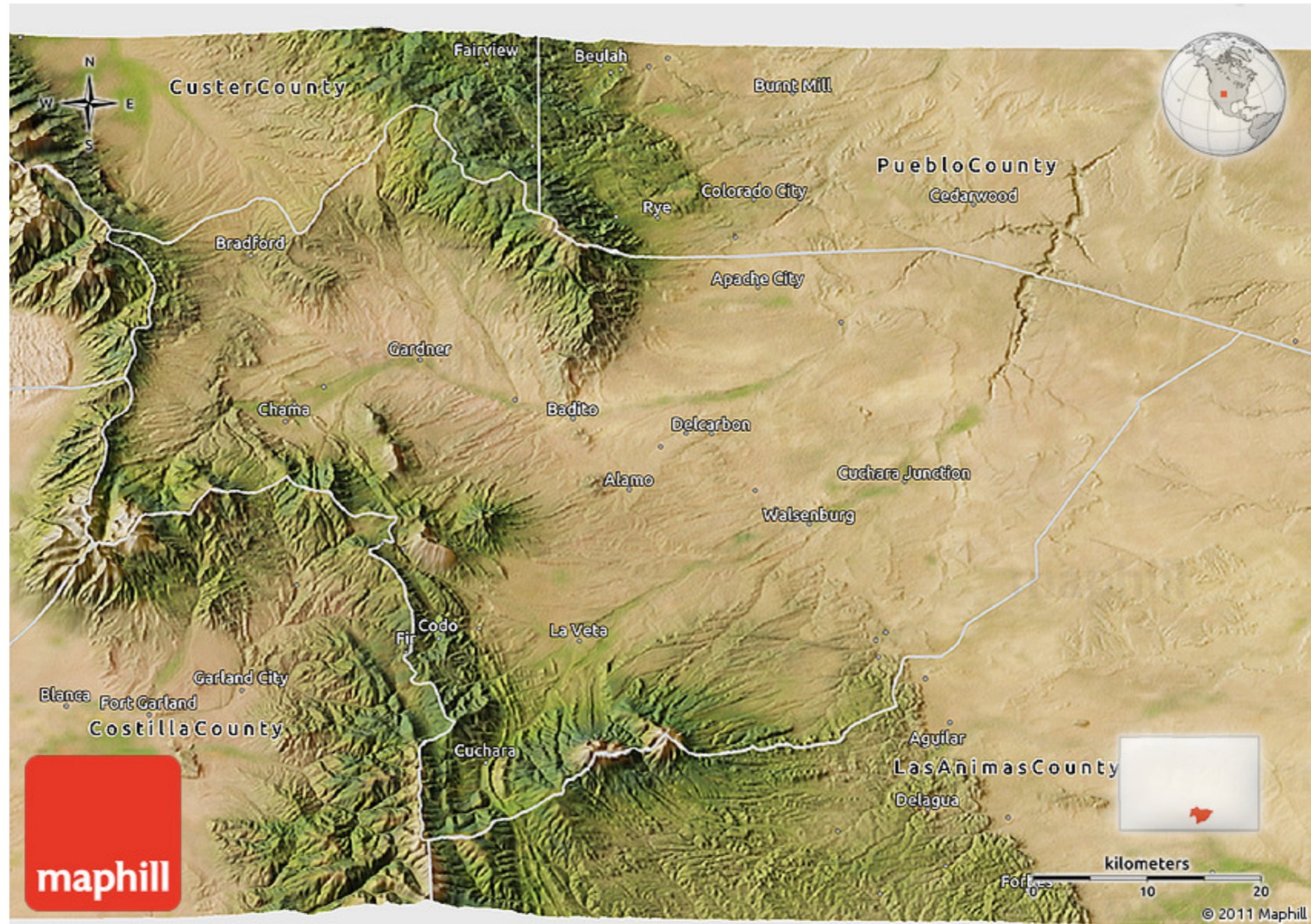
Principle I of the Rio Declaration on Environment and Development

RETHINKING SUSTAINABILITY:  
HEALTH/RESILIENCE/CLIMATE CHANGE

## SITE/CONTEXT:



## SITE/CONTEXT:



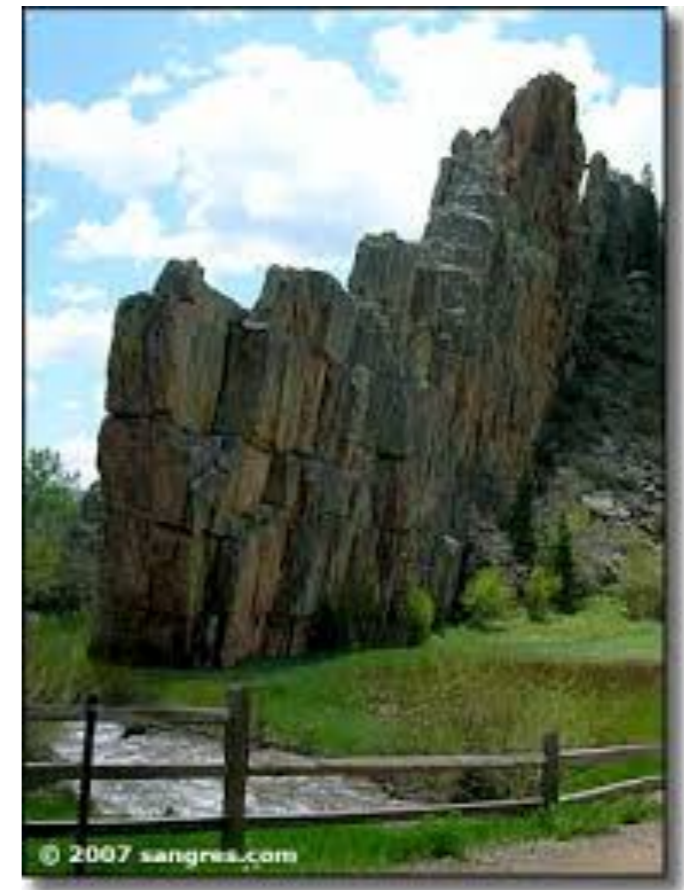
RETHINKING SUSTAINABILITY:  
HEALTH/RESILIENCE/CLIMATE CHANGE

## SITE/CONTEXT:



RETHINKING SUSTAINABILITY:  
HEALTH/RESILIENCE/CLIMATE CHANGE

## SITE/CONTEXT:



## SPRING CREEK FIRE 2018:

started on **Wednesday, June 27, 2018** near **Fort Garland, Colorado**/declared **100% contained** on **September 10, 2018**

burned a total of **108,045 acres (437 square kilometers)** and was the **third-largest wildfire** in Colorado history

**More than 140 structures were destroyed** in the fire

**Jesper Jorgenson, 52**, a citizen of Denmark/reported as being in the United States illegally, charged with over **200 counts of arson**/declared as **mentally unfit** to be tried criminally

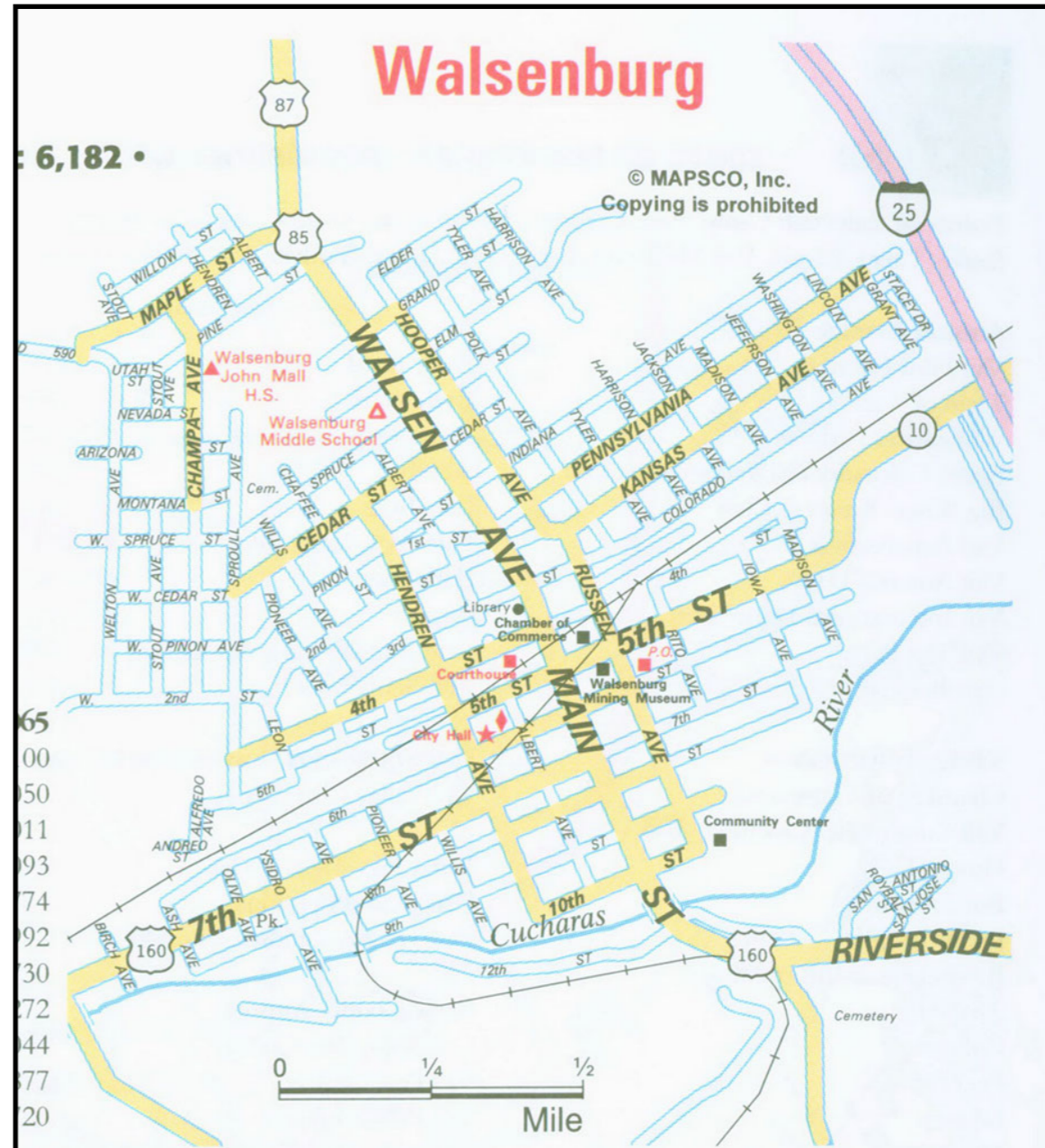
The only Colorado wildfires that consumed more acres than the Spring Creek fire were the **2002 Hayman fire (138,114 acres)** and the **2013 West Fork Complex fire (109,632 acres)**.





RETHINKING SUSTAINABILITY:  
HEALTH/RESILIENCE/CLIMATE CHANGE

## SITE/CONTEXT:



## GUIDING QUESTIONS:

- 1) What is **“human sustainability”** and how can it influence the way we design and construct the built environment?
- 2) What are the **ethical implications** of a frame of reference that views **health and well-being** as integral to architecture?
- 3) How can disciplines allied with architecture and design be encouraged to **“pool” expertise** to tackle larger the issues we confront in this area?
- 4) Is **arts integration** applicable in the context of design and the built environment? If so, how?
- 5) How can the **architectural design process** truly engage issues and meanings involved in human health and well-being?
- 6) Finally, how do we move forward to create **resilient** design methods, concepts, and insights that truly address **global climate change** and its after effects?

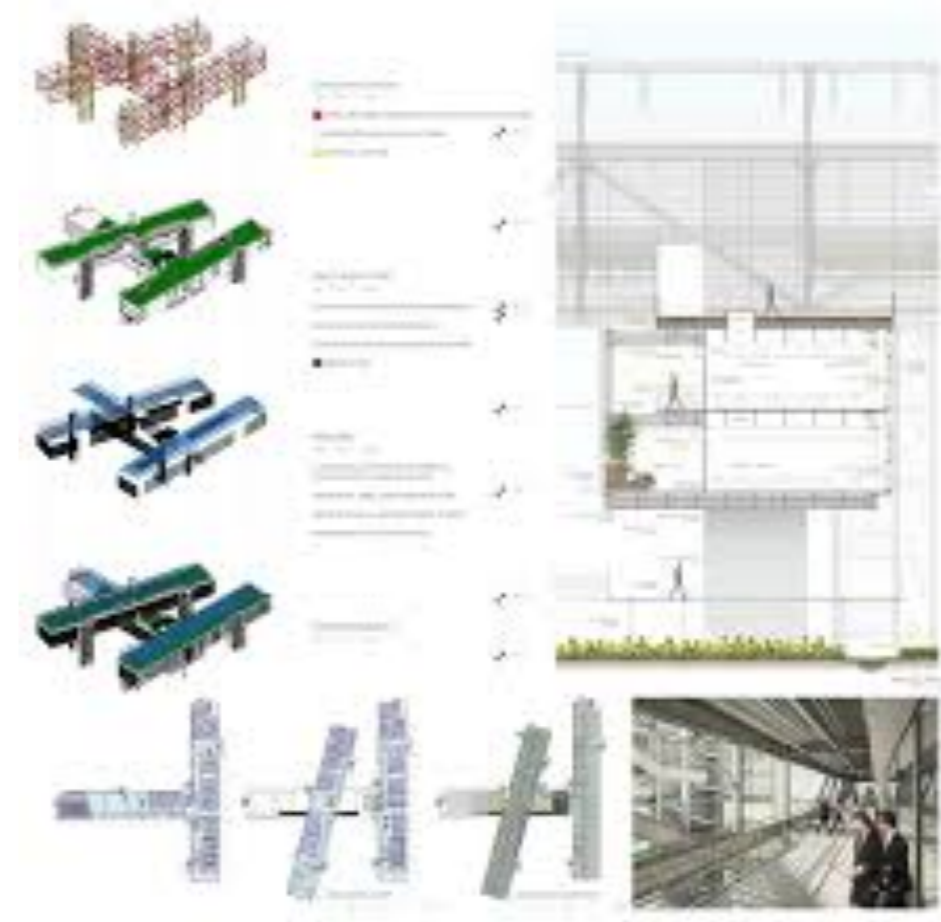


## PROGRAM/FACILITIES GOALS:

- 1) HYBRID: facilities/programing merging health services, rehabilitation treatment, early childhood education, wellness/nutrition education, and network building arts-based activities into the "mix."
- 2) single aesthetically meaningful complex/"holistic one stop shop" of health and wellness
- 3) **MUST** withstand potential flooding (flood issues/resilient design/sustainable development)
- 4) made out of steel, but must "fit" in the context of Walsenburg



## ACSA/AISC STEEL DESIGN 2020:



RETHINKING SUSTAINABILITY:  
HEALTH/RESILIENCE/CLIMATE CHANGE

## QUESTIONING DICOTOMIES:

HUMAN/NATURE  
URBAN/RURAL  
LANDSCAPE/BUILDING  
MODERN/TRADITION  
PUBLIC/PRIVATE  
BUILT/NATURAL

